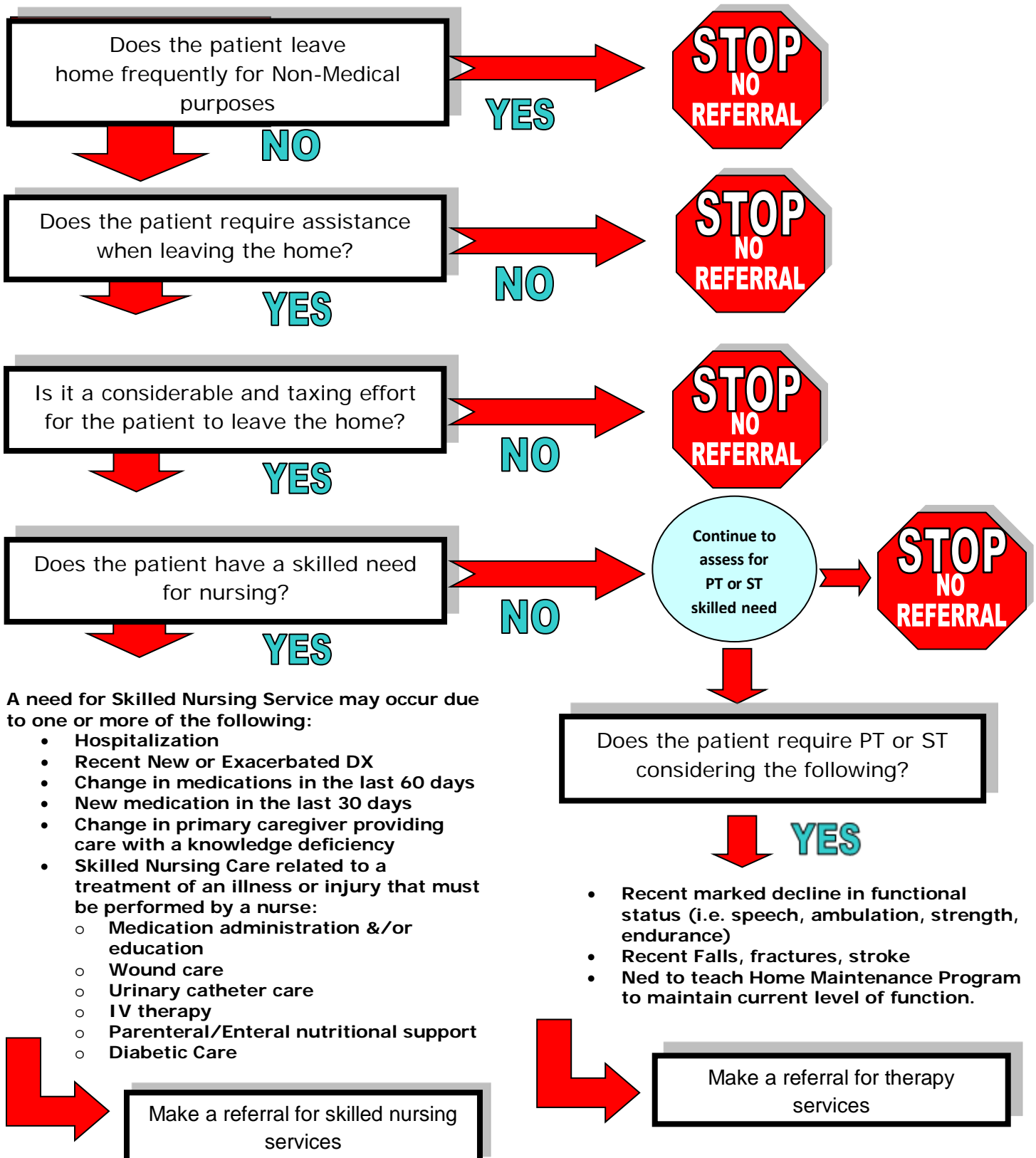
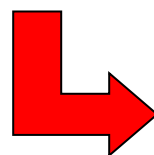
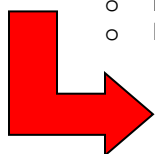


Does Your Patient Meet Medicare Homebound Criteria?



A need for Skilled Nursing Service may occur due to one or more of the following:

- Hospitalization
- Recent New or Exacerbated DX
- Change in medications in the last 60 days
- New medication in the last 30 days
- Change in primary caregiver providing care with a knowledge deficiency
- Skilled Nursing Care related to a treatment of an illness or injury that must be performed by a nurse:
 - Medication administration &/or education
 - Wound care
 - Urinary catheter care
 - IV therapy
 - Parenteral/Enteral nutritional support
 - Diabetic Care



Medicare Qualifying Criteria

- The patient must be eligible for Medicare benefits during the time the services are provided.
- A Medicare certified agency must provide services.
- The primary physician must establish and periodically review the plan of care at least every 60 days.
- Services must be provided in the patient's place of residence.
- The patient must meet homebound criteria.
- The services must be medically reasonable and necessary to the treatment of an illness or injury.
- The patient must need a qualifying skilled service (Skilled Nursing, Physical Therapy, and Speech Therapy) on an intermittent basis.

Homebound Criteria

According to Medicare, an individual is homebound if:

- An illness or injury that restricts the ability to leave home except with the aid of devices such as canes, wheelchairs, and walkers or the assistance of another person.
- It is a considerable and taxing effort to leave home.
- Absences are infrequent and for a short duration, or to receive medical care.
- Leaving home is medically contraindicated.

An individual would NOT be considered homebound if:

- Leaves the home frequently for social activities.
- Leaves the home against physician's orders, if this is done frequently or for long periods of time.
- Leaves the home for shopping or business on a regular basis.

Clarification:

- In most instances, if a patient drives, he/she would not be considered homebound, but it is not an absolute. Each patient must be evaluated on a case-by-case basis.
- Absences to attend religious services, is considered an "absence of infrequent or short duration," and allowable under the homebound definition.
- Occasional absences from the home for non-medical purposes such as an occasional trip to the barber, attendance at a family reunion, graduation, or other infrequent or unique event are allowed.

Home Health Skilled Services

- Observation & Assessment of Condition
- Enteral & Parenteral Nutrition
- Patient & Family Education of Disease Process
- Medication Education & Management
- Pain Management
- Physical Therapy
- Speech Therapy
- Occupational Therapy
- Diabetic Care
- Complicated Wound Care
- Ostomy Care
- Catheter Care
- IV Therapy

Pathway Health provides the insight, expertise and knowledge to keep your organization on the right path. Let a Pathway Professional assist your organization:

- Home Care License and Regulatory Review
- Acquisition Due Diligence
- Home Care Interim Management
- Leadership Development
- Education: Coding & OASIS-C Training
- Operational Efficiency Assessment
- Mock Survey/Survey Readiness
- Survey Recovery
- CHAP and Joint Commission Accreditation
- Corporate Compliance Review
- Quality Outcome Management
- Therapy Utilization Assessment
- Therapy Documentation Assessment
- Chronic Care Management
- Reimbursement Strategies

Contact us today at consult@pathwayhealth.com or 651-407-8699